

Certest ResisCheck[®] Carbapenemases



Fast and optimized detection of carbapenemases

Detection of 5 carbapenemases on a single strip: KPC | NDM | VIM | OXA-48 | IMP

Certest advantages

- ✓ IVDR Certification
- ✓ European manufacturing
- ✓ High signal intensity across all 5 lines
- ✓ Clear results with a clean membrane background
- ✓ Larger detection window for reading results
- ✓ Differential control line in green
- ✓ Sample type: Bacterial isolates from any biological specimen
- ✓ Results in **15 minutes**

KPC

KPC-2, KPC-3, KPC-4, KPC-5, KPC-6, KPC-23,
KPC-31, KPC-66

NDM

NDM-1, NDM-4, NDM-5, NDM-7, NDM-9

VIM

VIM-1, VIM-2, VIM-4, VIM-19, VIM-33,
VIM-38, VIM-63

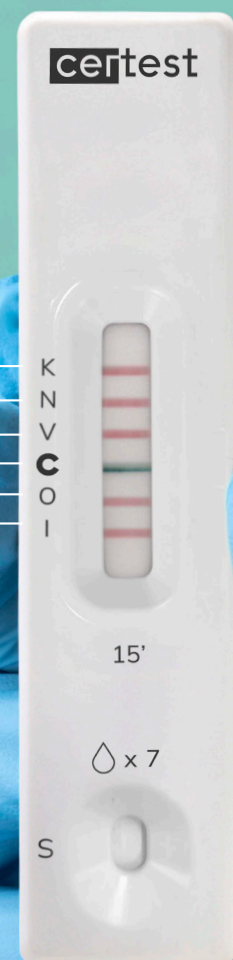
Control line

OXA-48

OXA-48, OXA-181, OXA-232, OXA-244,
OXA-163, OXA-370

IMP

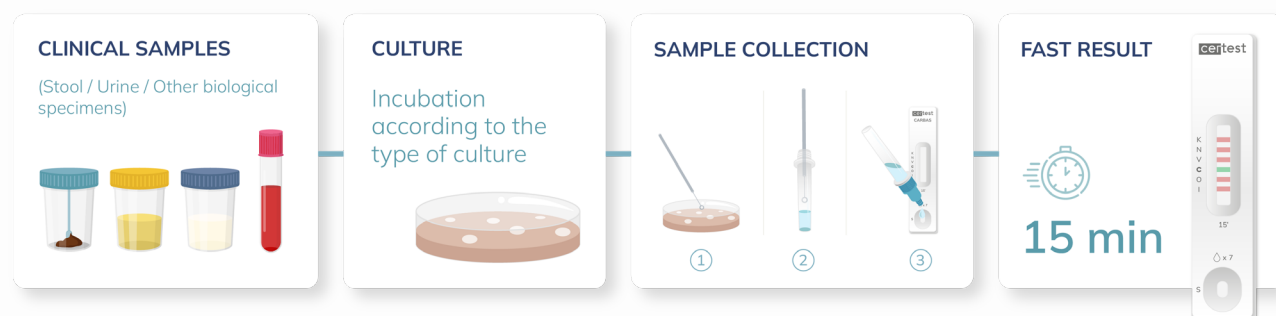
IMP-1, IMP-2, IMP-4, IMP-8, IMP-13, IMP-16,
IMP-22, IMP-23, IMP-26



What does it detect?

Enzyme	Primary bacterial group	Examples of associated species
KPC (Klebsiella Pneumoniae Carbapenemase)	Enterobacteriaceae	<i>Klebsiella pneumoniae</i> , <i>Escherichia coli</i> , other enterobacteriaceae
NDM (New Delhi Metalo-β-Lactamase)	Enterobacteriaceae	<i>Klebsiella pneumoniae</i> , <i>Escherichia coli</i>
VIM (Verona Integron-Encoded Metalo-β-Lactamase)	<i>Pseudomonas spp.</i> and Enterobacteriaceae	<i>Pseudomonas aeruginosa</i> , <i>Pseudomonas putida</i> , <i>Pseudomonas pseudoalcaligenes</i>
OXA-48 (Oxacillinase-48)	Enterobacteriaceae	<i>Klebsiella pneumoniae</i> , <i>Enterobacter cloacae</i> , <i>Escherichia coli</i> , <i>Morganella morganii</i>
IMP (Imipenemase)	<i>Pseudomonas spp.</i> and Enterobacteriaceae	<i>Pseudomonas aeruginosa</i> , diverse enterobacteriaceae

Workflow



Technical specifications

» Validated performance under routine laboratory conditions, achieving an overall agreement of 98.9% against established reference assays.

- **PPA:** 97,3%
- **NPA:** 99,3%
- **κ =** 0,97

- **Sensitivity:** > 95%
- **Specificity:** 100%

» Delivers robust performance comparable to established and routinely validated methodologies. Evaluation performed using 72 well characterized clinical isolates (360 comparative data points).

- Samples previously analyzed during routine diagnostic workflow.
- Discrepancies resolved by qPCR and sequencing
- Formal statistical analysis (PPA, NPA, kappa)

REF.: RB820001VC
Certest ResisCheck®
Carbapenemases

Contents: 20 devices

Storage: 2-30 °C

Shelf life: 24 months from manufacture