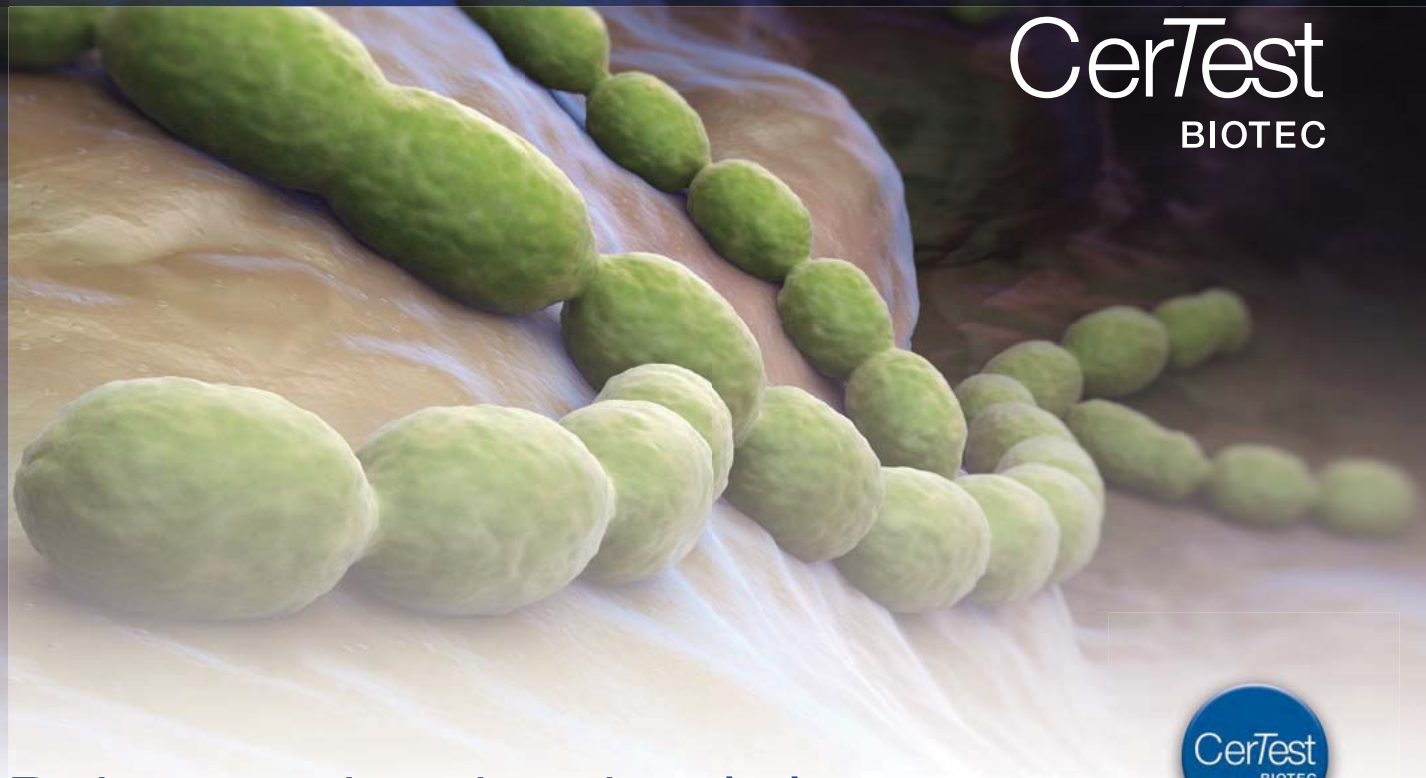


# Streptococcus pneumoniae detection kit

CerTest  
BIOTEC



## Pathogen and product description

Gram positive bacteria *Streptococcus pneumoniae* is one of the most important pathogen that affects mainly children and elderly and can cause life-threatening diseases. *Streptococcus pneumoniae* infection leads to many clinical manifestations including meningitis, septicemia, bacteremia, pneumonia, acute otitis media and sinusitis. It has caused great morbidity and mortality worldwide, especially in children. Pneumococcal infection annually has caused approximately 14.5 million cases of invasive pneumococcal disease (IPD) and 0.7-1 million deaths in children under five years old, mostly in developing and underdeveloped countries.

The CerTest *Streptococcus pneumoniae* card test allows for early diagnosis of *Streptococcus pneu-*

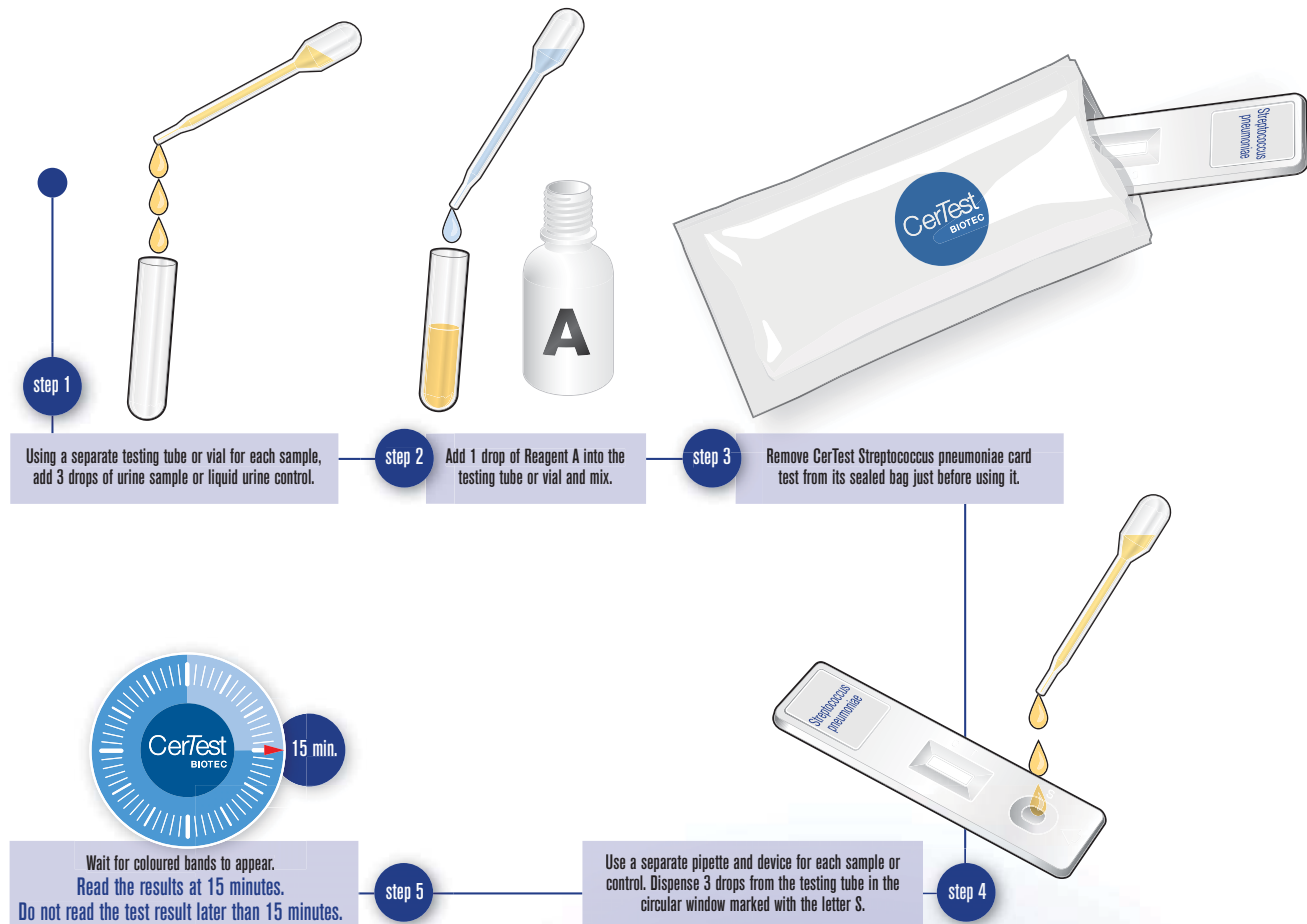
*moniae* infection through detection of a specific soluble antigen present in the urine of patients with *Streptococcus pneumoniae* infection. *Streptococcus pneumoniae* cell wall polysaccharide antigen has been detected in urine as early as three days after the onset of symptoms.

**CerTest *Streptococcus pneumoniae* one step card test** offers a simple and highly sensitive assay to make a presumptive diagnosis of pneumoniae caused by *Streptococcus pneumoniae* in infected humans from urine samples.

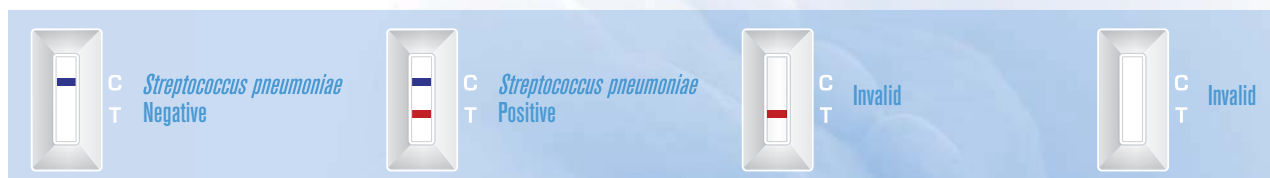


# Streptococcus pneumoniae detection kit

## Test procedure



## Interpretation of the results



### External Positive and Negative Controls are included in the kit

The use of positive and negative controls is recommended to assure functionality of reagents and proper performance of assay procedure.

### Clinical Sensitivity and Specificity

	Sensitivity	Specificity
CerTest Streptococcus pneumoniae IC Test vs Alere BinaxNow® Streptococcus pneumoniae Antigen Card	89.2% (74.6-97.0%)	98.6% (92.7-100%)



CERTEST BIOTEC, S.L.  
Pol. Industrial Río Gállego II, Calle J, Nº 1,  
50840, San Mateo de Gállego, Zaragoza (Spain)  
www.certest.es



EN16EN