



## H. pylori detection kit

*Helicobacter pylori* (*H. pylori*) is a spiral-shaped bacterium that is found in the gastric mucous layer or adherent to the epithelial lining of the stomach.

*H. pylori* causes more than 90% of duodenal ulcers and up to 80% of gastric ulcers.

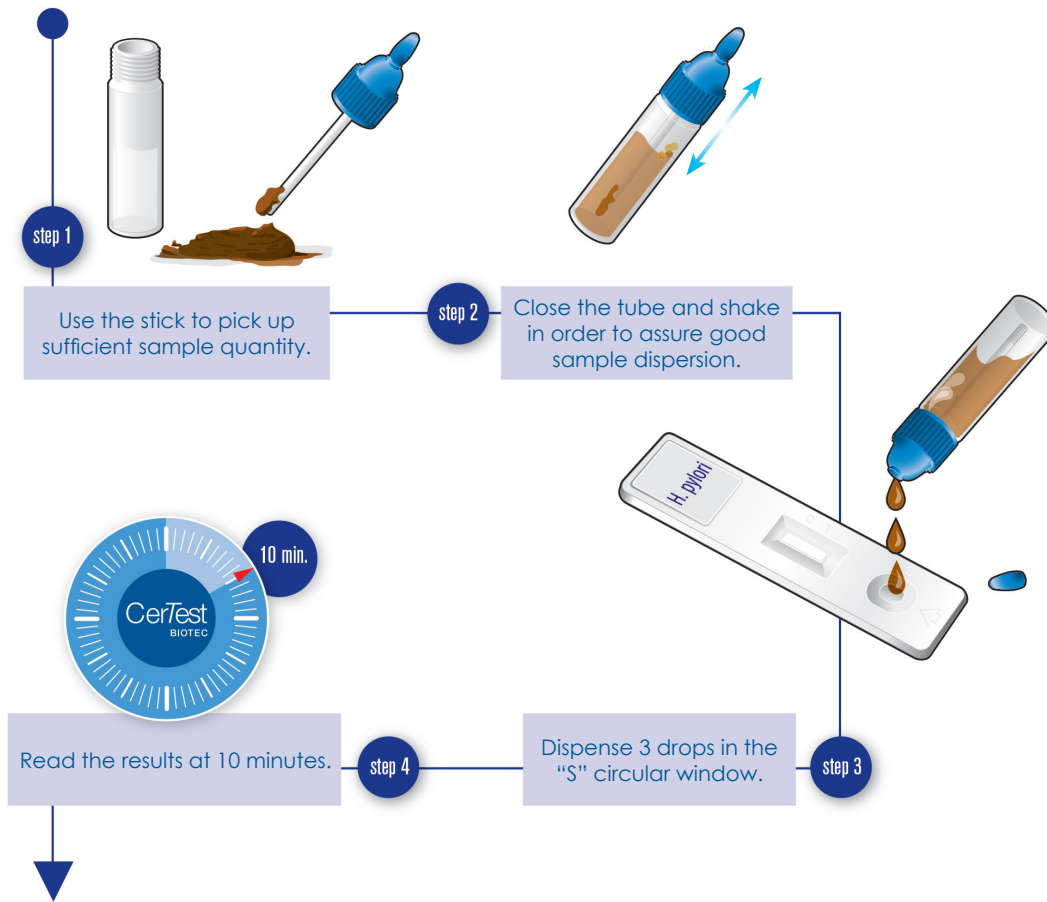
The importance of *Helicobacter pylori* testing has increased greatly since the strong correlation between the presence of bacteria and confirmed gastrointestinal diseases (stomach and duodenum) like gastritis, peptic ulcer disease and gastric carcinoma.

CerTest *H. pylori* one step card test is a coloured chromatographic immunoassay for the qualitative detection of *Helicobacter pylori* in stool samples.

CerTest *H. pylori* card test offers a simple, a highly sensitive and non-invasive screening assay to make a presumptive diagnosis of *Helicobacter pylori* infection.



## Test procedure



### Interpretation of the results



The intensity of the red coloured band in the test line (T) in the results window will vary depending on the concentration of antigens present in the specimen. However, neither the quantitative value nor the rate of increase in antigens can be determined by this qualitative test.

## Clinical Sensitivity and Specificity

### CerTest H. pylori vs VIASURE Helicobacter pylori Real Time Detection Kit:

	Mean Value	95% CI (confidence interval)
<b>Sensitivity</b>	98.2%	90.3 - 100.0%
<b>Specificity</b>	98.4%	91.2 - 100.0%
<b>PPV</b>	98.2%	90.3 - 100.0%
<b>NPV</b>	98.4%	91.2 - 100.0%

**CerTest**  
BIOTEC

**CerTest Biotec, S.L.**  
Pol. Industrial Río Gállego II · Calle J, Nº1  
50840, San Mateo de Gállego, Zaragoza (Spain)  
Tel. (+34) 976 520 354  
certest@certest.es | rapidtest@certest.es  
[www.certest.es](http://www.certest.es)

For more information and use procedure, read the instructions for use included in this product.



RapidTest/IU-P8V/0823EN