

Salmonella detection kit

CerTest

BIOTEC

CerTest
BIOTEC

Pathogen and product description

A total of 2501 different *Salmonella* serotypes have been identified up to 2004. *Salmonella enteritidis* and *Salmonella typhimurium*, the two most important serotypes for salmonellosis transmitted from animals to humans.

Salmonella infections are acquired by eating contaminated poultry, eggs or dairy products. The *Salmonella* spp. also spreads easily from raw or undercooked poultry to innocent vegetables, fruit or other foods via contaminated hands, knives, countertops or cutting boards. Due to the ability of *Salmonella* to multiply in a wide variety of foods, it is important to be able to isolate the organisms even when present in very small numbers in the faeces.

The symptoms of *Salmonella* infection are abdominal pain, diarrhoea, mild fever, chills, headache, nausea and vom-

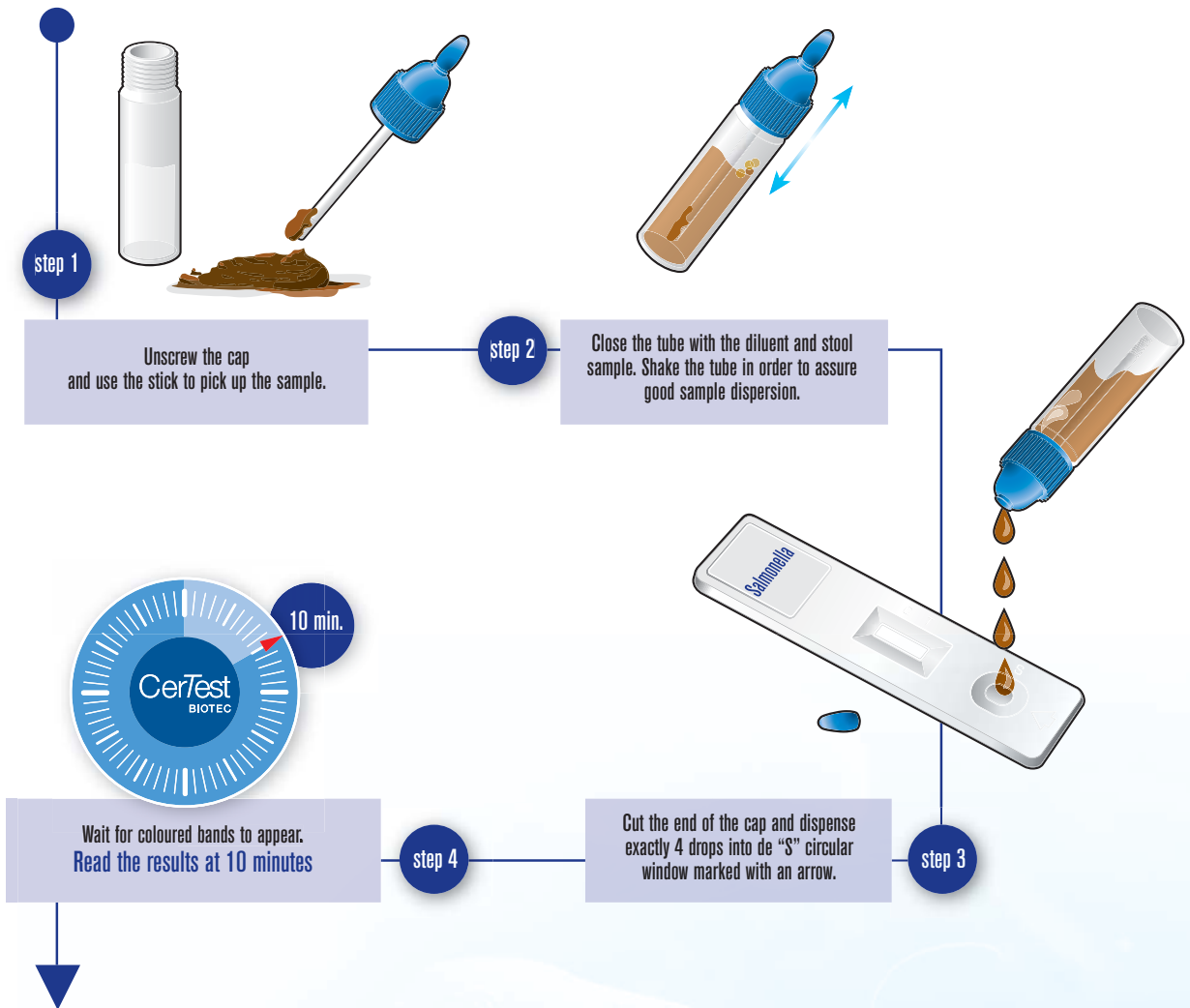
iting, developing 12-72 hours (but occasionally as long as 7 days) after infection. The discomfort generally lasts a few days. It can be dangerous for the elderly, infants and the immunocompromised, who may become extremely ill. *Salmonella* is also one of the leading predictors for reactive arthritis, a painful, chronic and potentially debilitating condition that causes joint inflammation.

CerTest *Salmonella* one step card test offers a simple and highly sensitive screening assay to make a presumptive diagnosis of *Salmonella* infection (salmonellosis) in stool samples and *Salmonella* suspected colonies in stool culture.



Salmonella detection kit

Test procedure



Interpretation of results



Clinical Sensitivity and Specificity

	Sensitivity	Specificity	PPV	NPV
CerTest <i>Salmonella</i> vs. Singlepath® <i>Salmonella</i>	>99%	>97%	91%	>99%



CERTEST BIOTEC, S.L.
Pol. Industrial Río Gállego II, Calle J, Nº 1,
50840, San Mateo de Gállego, Zaragoza (Spain)
www.certest.es

